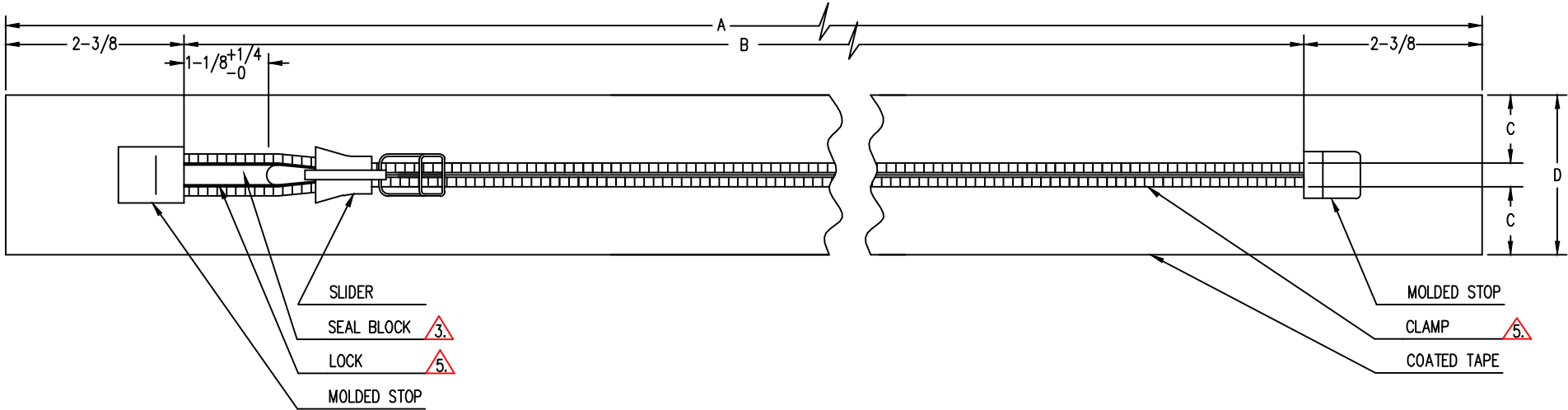


REVISIONS				
ZONE	LTR	DESCRIPTION	DATE	APPROVED



1 THRU 16

	DIM C	DIM D
62B/P	1-3/8+1/8-0	2-3/4+1/4-0
62C/P	1-3/8+1/8-0	2-3/4+1/4-0
74/P	1-3/8+1/8-0	2-3/4+1/4-0
86/P	1+1/8-0	2+1/4-0
87/P	1+1/8-0	2+1/4-0

SUGGESTED SOURCE OF SUPPLY				DIM A	DIM B	62B/P	62C/P	74/P	86/P	87/P
FIND NO.	CAGE NO.	VENDOR	VENDOR'S PART NUMBER							
1	IV095	YKK USA INC. C/O DIVERSIFIED MARKETING GROUP 109 FORREST AVENUE NARBERTH, PA 19072	TZ NC-81	SIZE 0720/6	10-3/4	6±1/4	ALL SIZES	ALL SIZES		
2				SIZE 0720/8	12-3/4	8±1/4			ALL SIZES	
5				SIZE 0720/28	32-3/4	28±1/4		SS, SR, SL		
6				SIZE 0720/30	34-3/4	30±1/4		MS, MR, ML		
7				SIZE 0720/32	36-3/4	32±1/4		LS, LR, LL		
8				SIZE 0720/34	38-3/4	34±1/4	SS, SR, SL	XS/S	XS, SR, SL	XS/S
9				SIZE 0720/36	40-3/4	36±1/4		XS/R, S/S		XS/R, S/S
10				SIZE 0720/38	42-3/4	38±1/4	MS, MR, ML	XS/L, S/R, M/S	MS, MR, ML	XS/L, S/R, M/S
11				SIZE 0720/40	44-3/4	40±1/4		XS/X-L, S/L M/R, L/S		XS/X-L, S/L M/R, L/S
12				SIZE 0720/42	46-3/4	42±1/4	LS, LR, LL	S/X-L, M/L, L/R, XL/S	LS, LR, LL	S/X-L, M/L, L/R, XL/S
13				SIZE 0720/44	48-3/4	44±1/4		M/X-L, L/L, XL/R, XXL/S		M/X-L, L/L, XL/R, XXL/S
14				SIZE 0720/46	50-3/4	46±1/4	XLS, XLR, XLL	L/X-L, XL/L, XXL/R	XLS, XLR, XLL	L/X-L, XL/L, XXL/R
15				SIZE 0720/48	52-3/4	48±1/4		XL/X-L, XXL/L		XL/X-L, XXL/L
16				SIZE 0720/50	54-3/4	50±1/4		XXL/X-L		XXL/X-L

NOTES:

- ONLY THE ITEM DESCRIBED ON THIS DRAWING WHEN PROCURED FROM THE VENDOR(S) LISTED HEREON IS APPROVED FOR USE IN THE APPLICATION(S) SPECIFIED HEREON. A SUBSTITUTE ITEM SHALL NOT BE USED WITHOUT PRIOR APPROVAL BY THE COMMANDING OFFICER, NAVAL AIR WARFARE CENTER, AIRCRAFT DIVISION, 48110 SHAW ROAD, UNIT #5 PATUXENT RIVER MD 20670-1906.
- IDENTIFICATION OF THE APPROVED SOURCE(S) OF SUPPLY HEREON IS NOT TO BE CONSTRUED AS A GUARANTEE OF PRESENT OR OF CONTINUED AVAILABILITY AS A SOURCE OF SUPPLY FOR THE ITEM DESCRIBED ON THE DRAWING.
- ① THRU ⑩ SHALL MEET INSPECTION REQUIREMENTS OF MIL-DTL-85633.
- ① THRU ⑩ PROVIDES A FULL SEAL, PRESSURIZED FROM EITHER SIDE, AGAINST AIR, DUST, MOISTURE, LIGHT, LIQUID, AND GASES. FLEXING TWISTING OR BENDING SHALL NOT IMPEDE FUNCTION.
- ① THRU ⑩ SHALL BE MADE OF TWO IDENTICAL STRINGERS EACH, CONSISTING OF NEOPRENE COATED FABRIC TAPE, METAL INNER LOCKING ELEMENTS HOLD THE STRINGERS TOGETHER TO COMPRESS THE SEALING SURFACES, AND THE OUTER CLAMPS PROVIDE A METAL TO METAL SURFACE FOR THE OPERATION MOLDED BOTTOM STOP.
- THE MINIMUM OPENING FROM END OF SEAL BLOCK TO EDGE OF SLIDER SHALL BE FOUR INCHES FOR ①.
- THE MINIMUM OPENING FROM END OF SEAL BLOCK TO EDGE OF SLIDER SHALL BE SIX INCHES FOR ②.
- LENGTH AS STATED IN CONTRACT OR PURCHASE ORDER.
- NEXT ASSEMBLY SHALL BE AS FOLLOWS:

CWU-62B/P	3324AS103	①	⑧	⑩	⑫	⑭				
CWU-62C/P	3653AS100	⑧	⑨	⑩	⑪	⑫	⑬	⑭	⑮	⑯
CWU-74/P	1370AS403	①	⑤	⑥	⑦	⑧				
CWU-86/P	3769AS101	②	⑧	⑩	⑫	⑭				
CWU-87/P	3769AS201	⑧	⑨	⑩	⑪	⑫	⑬	⑭	⑮	⑯

SOURCE CONTROL DRAWING

16	⑨	AR	3769AS103-16	ZIPPER, OMNI-ENVIRONMENT BARRIER, ENTRY			③	④	⑤	
15	⑨	AR	3769AS103-15	ZIPPER, OMNI-ENVIRONMENT BARRIER, ENTRY			③	④	⑤	
14	⑨	AR	3769AS103-14	ZIPPER, OMNI-ENVIRONMENT BARRIER, ENTRY			③	④	⑤	
13	⑨	AR	3769AS103-13	ZIPPER, OMNI-ENVIRONMENT BARRIER, ENTRY			③	④	⑤	
12	⑨	AR	3769AS103-12	ZIPPER, OMNI-ENVIRONMENT BARRIER, ENTRY			③	④	⑤	
11	⑨	AR	3769AS103-11	ZIPPER, OMNI-ENVIRONMENT BARRIER, ENTRY			③	④	⑤	
10	⑨	AR	3769AS103-10	ZIPPER, OMNI-ENVIRONMENT BARRIER, ENTRY			③	④	⑤	
9	⑨	AR	3769AS103-9	ZIPPER, OMNI-ENVIRONMENT BARRIER, ENTRY			③	④	⑤	
8	⑨	AR	3769AS103-8	ZIPPER, OMNI-ENVIRONMENT BARRIER, ENTRY			③	④	⑤	
7	⑨	AR	3769AS103-7	ZIPPER, OMNI-ENVIRONMENT BARRIER, ENTRY			③	④	⑤	
6	⑨	AR	3769AS103-6	ZIPPER, OMNI-ENVIRONMENT BARRIER, ENTRY			③	④	⑤	
5	⑨	AR	3769AS103-5	ZIPPER, OMNI-ENVIRONMENT BARRIER, ENTRY			③	④	⑤	
4										
3										
2	⑨	AR	3769AS103-2	ZIPPER, OMNI-ENVIRONMENT BARRIER, PORTAL			③	④	⑤	⑦
1	⑨	AR	3769AS103-1	ZIPPER, OMNI-ENVIRONMENT BARRIER, PORTAL			③	④	⑤	⑧

DISTRIBUTION STATEMENT A: APPROVED FOR PUBLIC RELEASE; DISTRIBUTION IS UNLIMITED. CAD MAINTAINED. CHANGES SHALL BE INCORPORATED BY THE DESIGN ACTIVITY.		INTERPRET DRAWING IAW ASME Y14.100 UNLESS OTHERWISE SPECIFIED DIMENSIONS ARE IN INCHES TOLERANCES SHALL NOT BE CUMULATIVE		NAVAL AIR WARFARE CENTER AIRCRAFT DIVISION/PATUXENT RIVER HUMAN SYSTEMS ENGINEERING DEPT. (4.8.)		DEPARTMENT OF THE NAVY NAVAL AIR SYSTEMS COMMAND PATUXENT RIVER, MD 20670-1628			
1370AS403	CWU-74/P	FRACTIONS	ANGLES ±0°30'	DRAFTSMAN	J. SIWINSKI	DATE	18MAR05	ZIPPER, OMNI-ENVIRONMENT BARRIER, ANTIEXPOSURE,	
3324AS103	CWU-62B/P	DECIMALS .XXX	.XXX	CHECKER	B. HARVEY		18MAR05	CWU-62B/P, CWU-62C/P, CWU-74/P, CWU-86/P, CWU-87/P	
3653AS100	CWU-62/CP	SURFACE TEXTURE IAW ANSI B46.1	✓	PROJECT ENGINEER	<i>Jim DeB...</i>		18MAR05	SIZE	CAGE NO.
3769AS101	CWU-86/P	REMOVE ALL BURRS. BREAK		PROJECT TEAM LEADER/ SYSTEM ENGINEER	<i>Jose Cap...</i>		18MAR05	D	30003
3769AS201	CWU-87/P							NAVAIR DWG. NO.	3769AS103
NEXT ASSY		USED ON		APPLICATION		SCALE		SEE 2002-12	
						NONE		SHEET 1 OF 1	